



For additional install
information please visit
www.p3gauges.com/install

Gen 6 Explorer Install Guide



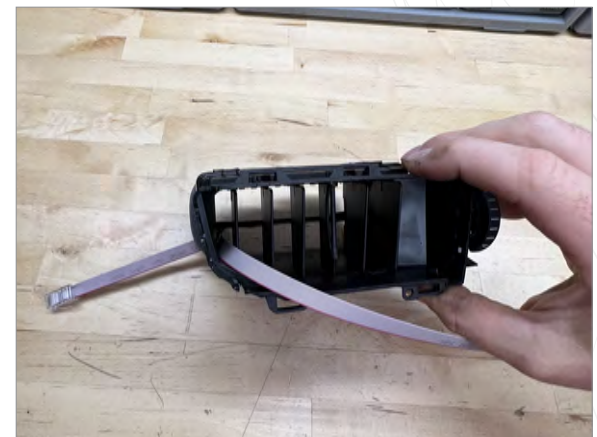
1 Use small flathead screwdriver to remove slat assembly from vent housing



2 Remove bottom two slats from slat assembly



3 Install display into slat assembly



4 Feed ribbon cable through bottom left of vent housing (keep cable flat and ensure pink side faces down)

WARRANTY & LIABILITY:
Neither P3 Cars, nor its dealers or agents shall be liable in any way, for any damage, loss, injury or other claims, resulting from the installation or use of this product. By purchasing or installing this product, you assume all liability of any kind connected with the use and/or application of this product. If you are unsure that you can safely install and use this product, consult a qualified installer or mechanic. The warranty on this product covers only the product itself for a period of 12 months from the date of purchase, and it will be at our discretion to repair or replace the affected parts. No user serviceable parts inside. Warranty will be voided if product shows physical damage.



5 Install slat assembly back into vent housing (Make sure handle fork engages correct vertical slot)



6 Fold ribbon cable around back side of vent as shown (optional: can be tucked under foam)



For additional install
information please visit
www.p3gauges.com/install



Gauge Ready for Installation into Vehicle

WARRANTY & LIABILITY:
Neither P3 Cars, nor its dealers or agents shall be liable in any way, for any damage, loss, injury or other claims, resulting from the installation or use of this product. By purchasing or installing this product, you assume all liability of any kind connected with the use and/or application of this product. If you are unsure that you can safely install and use this product, consult a qualified installer or mechanic. The warranty on this product covers only the product itself for a period of 12 months from the date of purchase, and it will be at our discretion to repair or replace the affected parts. No user serviceable parts inside. Warranty will be voided if product shows physical damage.