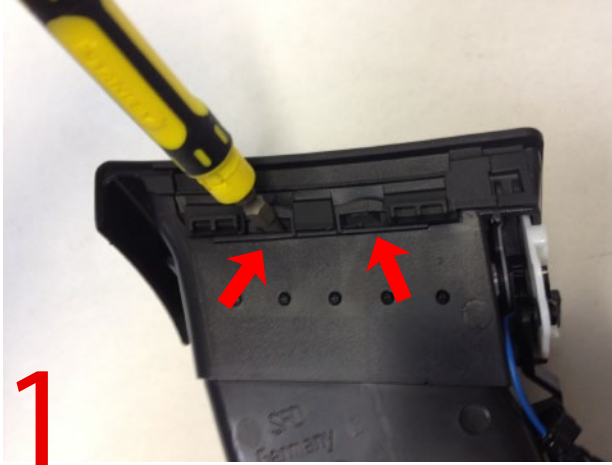




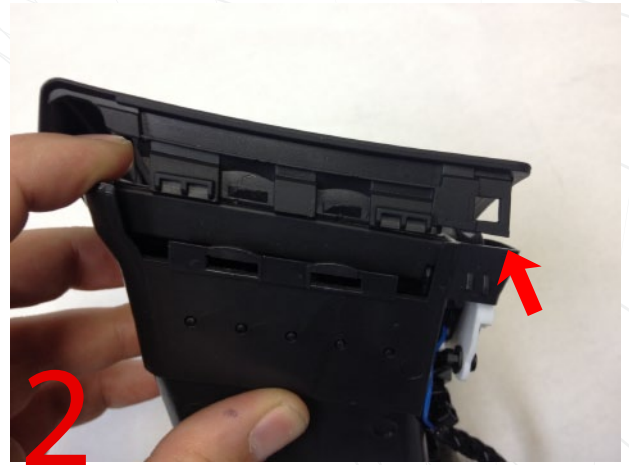
P3CARS.COM
PRECISION • PASSION • PERFORMANCE

Please download the latest copy of this document from www.p3cars.com/install

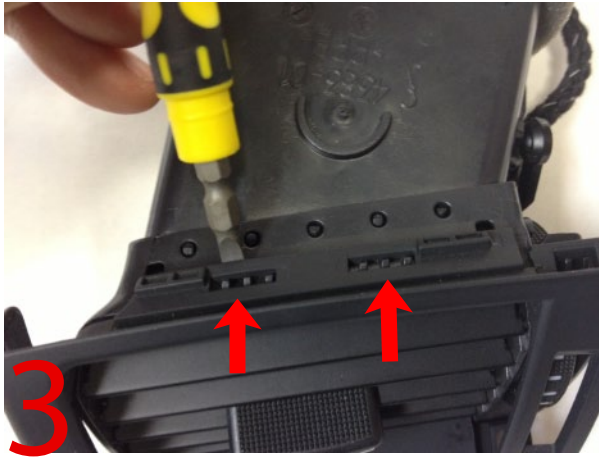
Audi B7 Vent Install



1 Carefully pry the bottom of the vent open by inserting a flat head screwdriver exactly as shown.



2 Do this to both clips so that the base of the vent face is free. There is also a clip to the far right.



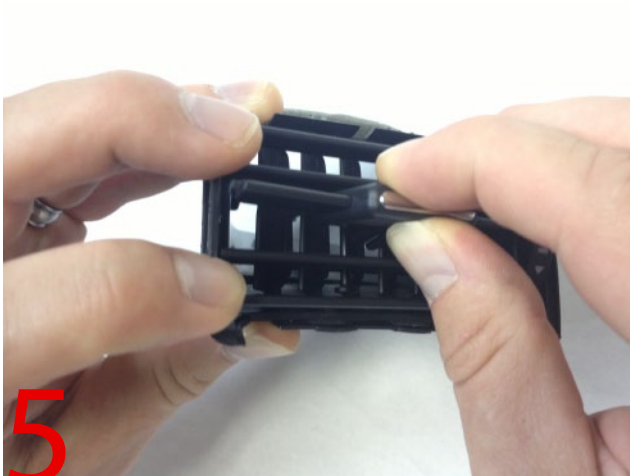
3 Repeat on the top of the vent.



4 After all clips are free the face will come off.

WARRANTY & LIABILITY:

Neither P3 Cars, nor its dealers or agents shall be liable in any way, for any damage, loss, injury or other claims, resulting from the installation or use of this product. By purchasing or installing this product, you assume all liability of any kind connected with the use and/or application of this product. If you are unsure that you can safely install and use this product, consult a qualified installer or mechanic. The warranty on this product covers only the product itself for a period of 6 months from the date of purchase, and it will be at our discretion to repair or replace the affected parts. No user serviceable parts inside. Warranty will be voided if product shows physical damage.



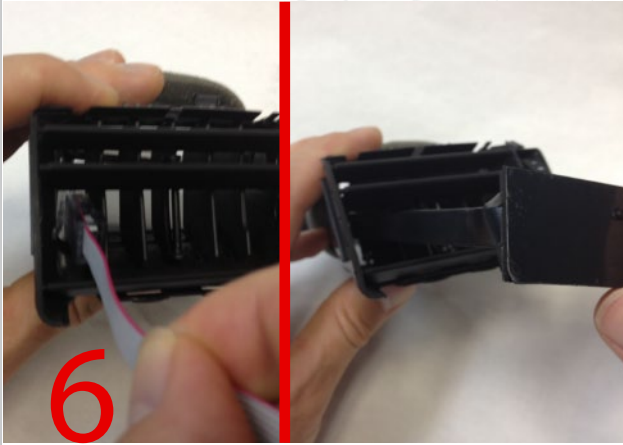
5 Remove the center slat with the controller, along with the slat directly below it so that your vent looks like the one shown on the right with 2 missing slats.





P3CARS.COM
PRECISION • PASSION • PERFORMANCE

Please download the latest copy of this document from www.p3cars.com/install



6 Feed the cable through the far left opening between the inner slats and out the back under the shutoff paddle. The cable is flat enough that it will not interfere with the closure of the vent.



Insert the display face into the vent starting on the side closest to the open close wheel. The P3 display has long prongs on this side.



8 Apply pressure to the other side to see the gauge fully into the vent. There are small grabber prongs on the P3 display to hold it in place into the slat holes.



9 Re-install the vent face, taking care to not apply pressure until you are sure the face is lined up properly.

WARRANTY & LIABILITY:

Neither P3 Cars, nor its dealers or agents shall be liable in any way, for any damage, loss, injury or other claims, resulting from the installation or use of this product. By purchasing or installing this product, you assume all liability of any kind connected with the use and/or application of this product. If you are unsure that you can safely install and use this product, consult a qualified installer or mechanic. The warranty on this product covers only the product itself for a period of 6 months from the date of purchase, and it will be at our discretion to repair or replace the affected parts. No user serviceable parts inside. Warranty will be voided if product shows physical damage.



10

You're Done!

See the car install video at p3cars.com/install

Please be sure to read the operation and configuration guides. If you have any questions please e-mail support@p3cars.com

Enjoy your new gauge!