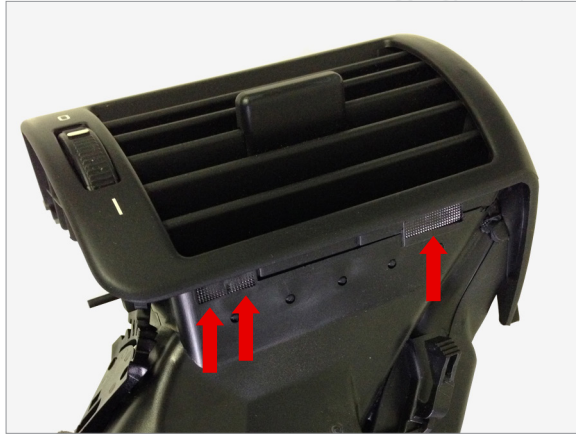




P3CARS.COM
PRECISION • PASSION • PERFORMANCE

Please download the latest copy of this document from www.p3cars.com/install

BMW E46



1 Use an exacto knife cut a line thru the three seam welded regions on the top of the vent.



2 Bend down and forward to break lower bonds and unclip clips.



3 Remove bottom two vent slats from the vent slat keeper.



4 Remove bottom two vent slats.

WARRANTY & LIABILITY:

Neither P3 Cars, nor its dealers or agents shall be liable in any way, for any damage, loss, injury or other claims, resulting from the installation or use of this product. By purchasing or installing this product, you assume all liability of any kind connected with the use and/or application of this product. If you are unsure that you can safely install and use this product, consult a qualified installer or mechanic. The warranty on this product covers only the product itself for a period of 6 months from the date of purchase, and it will be at our discretion to repair or replace the affected parts. No user serviceable parts inside. Warranty will be voided if product shows physical damage.



5 Starting at the right, as a single unit remove top 3 slats and leave them bound by the keep.



6 Remove slats from left of vent.



P3CARS.COM
PRECISION • PASSION • PERFORMANCE

Please download the latest copy of this document from www.p3cars.com/install



7 Install P3Cars gauge into the bottom vent clips left side first and then right side. Make sure clips are seated in these notches.



8 Reinstall vent slats right side first.



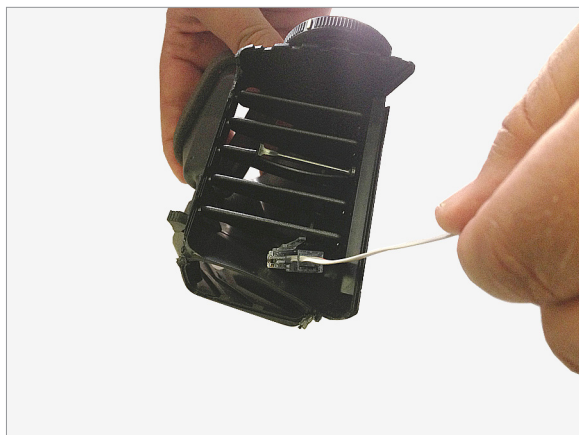
9 Clip in vent slats on the right one by one.



10 Insure protective film is free from under the facia trim.

WARRANTY & LIABILITY:

Neither P3 Cars, nor its dealers or agents shall be liable in any way, for any damage, loss, injury or other claims, resulting from the installation or use of this product. By purchasing or installing this product, you assume all liability of any kind connected with the use and/or application of this product. If you are unsure that you can safely install and use this product, consult a qualified installer or mechanic. The warranty on this product covers only the product itself for a period of 6 months from the date of purchase, and it will be at our discretion to repair or replace the affected parts. No user serviceable parts inside. Warranty will be voided if product shows physical damage.



11 Feed cable in left most side of vent against vent housing wall.



12 Bring cable out bottom left and under flap.



P3CARS.COM
PRECISION • PASSION • PERFORMANCE

Please download the latest copy of this document from www.p3cars.com/install



13 Clip front of vent back on rear making sure all seams line up and that lower outer clip is not tucked inside rear of vent housing.



14 Insure that cross hair clip is seated and clipped.



15 With an hi temp epoxy re bind the front and rear of vent housing at union joint.



16 Re-attach the vent face, starting at the bottom with the 2 circular clips.

WARRANTY & LIABILITY:

Neither P3 Cars, nor its dealers or agents shall be liable in any way, for any damage, loss, injury or other claims, resulting from the installation or use of this product. By purchasing or installing this product, you assume all liability of any kind connected with the use and/or application of this product. If you are unsure that you can safely install and use this product, consult a qualified installer or mechanic. The warranty on this product covers only the product itself for a period of 6 months from the date of purchase, and it will be at our discretion to repair or replace the affected parts. No user serviceable parts inside. Warranty will be voided if product shows physical damage.



P3CARS.COM
PRECISION • PASSION • PERFORMANCE