



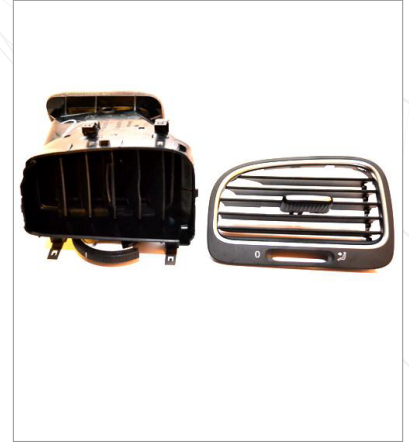
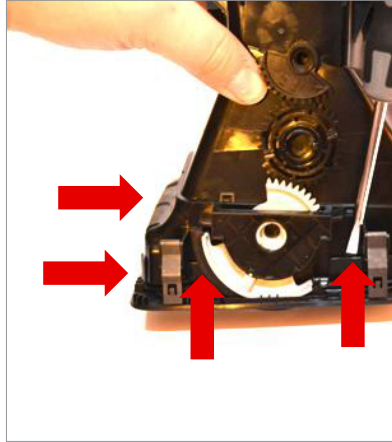
P3CARS.COM
PRECISION • PASSION • PERFORMANCE

Please download the latest copy of this document from www.p3cars.com/install

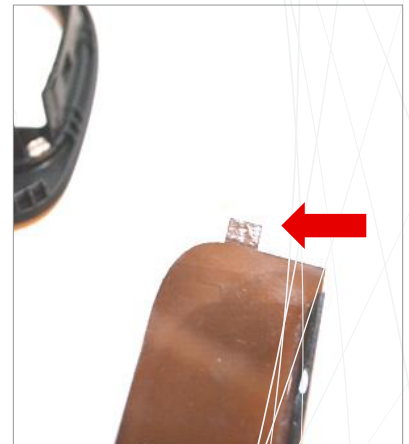
Mk6 Vent Gauge Assembly

Refer to the "Car Installation" instructions for removing your vent from the car.

WARNING - Do this assembly in a warm area with lots of light, allow parts to warm up to room temperature or the vent plastic will be brittle.



- 1 Prepare the vent. Using a flat head screwdriver, unclip the vent face starting with the bottom clips. You may need to rotate the open/close dial to gain access to the lower clips. Wedge the screwdriver behind the vent front at the tab and force it over the tab.



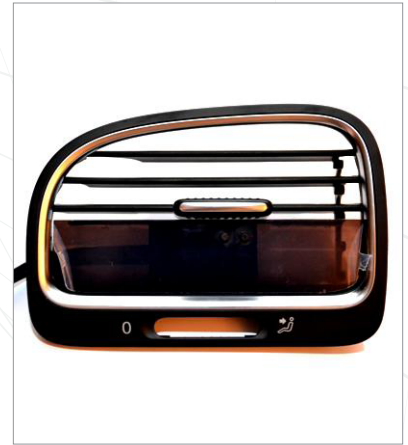
- 2 Remove the slats assembly, then remove ONLY the 2 bottom slats and set aside. Remove the adhesive backing from the glass back.

WARRANTY & LIABILITY:
Neither P3 Cars, nor its dealers or agents shall be liable in any way, for any damage, loss, injury or other claims, resulting from the installation or use of this product. By purchasing or installing this product, you assume all liability of any kind connected with the use and/or application of this product. If you are unsure that you can safely install and use this product, consult a qualified installer or mechanic. The warranty on this product covers only the product itself for a period of 6 months from the date of purchase, and it will be at our discretion to repair or replace the affected parts. No user serviceable parts inside. Warranty will be voided if product shows physical damage.



P3CARS.COM
PRECISION • PASSION • PERFORMANCE

Please download the latest copy of this document from www.p3cars.com/install



3 Insert the glass into the vent face from behind, make sure the bottom lip of the glass is OVER the bottom ridge of the vent face as shown in the photos below. Clip the slat assembly back into the vent face from behind, pinching the gauge glass in place.



4 Feed the gauge wire through the far left slat, and line up the slat controller onto the inner slat bar before clipping the vent back together. You may need to clip the left side of the vent last to get all the clips to fasten.

WARRANTY & LIABILITY:
Neither P3 Cars, nor its dealers or agents shall be liable in any way, for any damage, loss, injury or other claims, resulting from the installation or use of this product. By purchasing or installing this product, you assume all liability of any kind connected with the use and/or application of this product. If you are unsure that you can safely install and use this product, consult a qualified installer or mechanic. The warranty on this product covers only the product itself for a period of 6 months from the date of purchase, and it will be at our discretion to repair or replace the affected parts. No user serviceable parts inside. Warranty will be voided if product shows physical damage.